

CS Quad Series Post-Trim Thermoformer

The Ultimate in
Deep Draw, Detail
& Productivity



Specifications	CS-4042	CS-5050	CS-5454	CS-6464
Maximum Mold Size (Width x Length)	40" x 42" (1016mm x 1067mm)	50" x 50" (1270mm x 1270mm)	54" x 54" (1372mm x 1372mm)	64" x 64" (1626mm x 1626mm)
Strength	180T/1600KN	260T/2310KN	260T/2310KN	260T/2310KN
Coining Force	100T/890KN	180T/1600KN	180T/1600KN	180T/1600KN
Platen Stroke - Top / Bottom*	7.38" / 7.38" (187mm / 187mm)	9.75" / 9.75" (248mm / 248mm)	9.75" / 9.75" (248mm / 248mm)	9.75" / 9.75" (248mm / 248mm)
Maximum Forming Pressure	100 psi	100 psi	100 psi	100 psi
Sheet Width	43" (1092mm)	53" (1346mm)	57" (1448mm)	67" (1702mm)
Oven	Three stops or four stops top and bottom	Four stops or five stops top and bottom	Four stops or five stops top and bottom	Four stops or five stops top and bottom
Air Consumption @ 80 psi†	1.00 scfm	1.00 scfm	1.00 scfm	1.00 scfm

*Deep draw configurations available †Air consumption does not include tooling functions



CS Quad Series Post-Trim Thermoformer

The ultimate in deep draw, detail and productivity

Our Quad Series™ thermoformer is the ultimate in brute-strength and production output. The Quad Series combines high-tonnage coining technology with traditional thermoforming processes to produce highly-detailed parts. It delivers 180 tons of coining force and 260 tons of holding force, so no matter the material type or depth of draw the Quad Series will create consistent, products with the utmost detail.

The girth of the steel in the frame, servo-driven platens, heavy-duty drive assemblies and bearings all work together to withstand immense force with virtually no deflection across a mold area up to 64 by 64 inches. The Quad Series offers many other unique innovations such as our patented Servo Plug Drive which helps to improve material distribution within your product allowing you to pack all rows and reduce waste.

Partner the Quad Series former, LS-Series trim press, automation and tooling from BMG for an unparalleled, integrated turnkey solution.

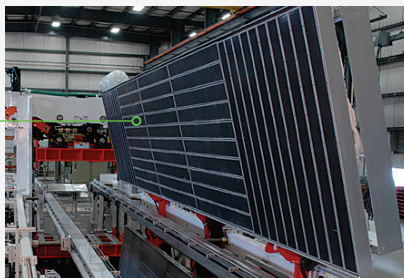
Dual Index System



Patented Roller Screw 3rd Motion



Full Open Clamshell Oven



Hinged Rail System



FEATURES

- Patented Servo Plug Drive – Increased process window with improved material distribution
- High Performance Four Toggle Form Station – the Quad Series form station is the premier form station in the industry; smooth, precise movements with virtually zero platen deflection for your intricately detailed products consistently at high speeds
- High-Volume Vacuum & Air Reservoirs – Vacuum and air reservoirs are strategically sized and placed for rapid response and faster cycle times

OPTIONS

- Form Station Stroke & Tonnage
- Top or Bottom Servo Plug Drive (Patented)
- Roller Infeed System
- Sheet Edge Pre-Heaters
- Hinged Rails
- Dual Index Motors
- Oven Cooling Plates
- Independent Motorized Rail Adjustment
- UL, CE, CSA, & HSE Approvals
- International Voltages Available

To see how BMG Forming Solutions can help your business, reach out today.



Shaping next.

sales@onebmg.com

+1 865 777 9477

onebmg.com